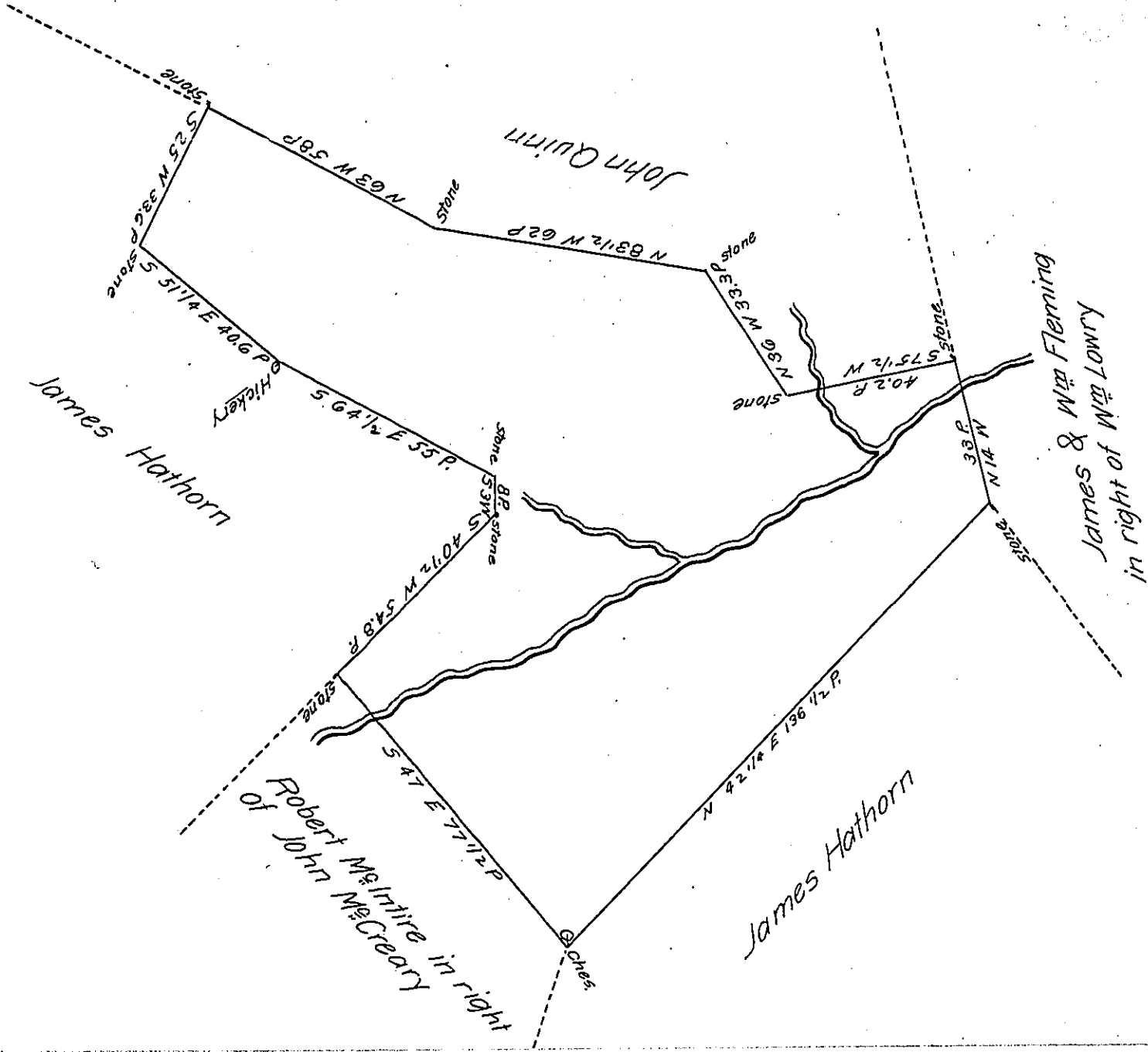


FORM No. 1.



The above Draught represents a Tract of Land situate in Lower Oxford Township Chester County containing 91^{ac} 95^{sq} & Allowance of Six per cent &c. Being a part of a Tract of 128^{ac} & Allowance which was Surveyed to John McCreary on his Warrant dated the 14th of November 1746. Surveyed April 5th 1815.

Jacob Spangler Esq. }
 Surveyor General }

Arthur Andrews Jr. D.S.

IN TESTIMONY that the above is a copy of the original remaining on file in the Department of Internal Affairs of Pennsylvania, made conformably to an Act of Assembly approved the 16th day of February, 1833, I have hereunto set my Hand and caused the Seal of said Department to be affixed at Harrisburg, this nineteenth day of January 1906

Leaac R. Brown
 Secretary of Internal Affairs.